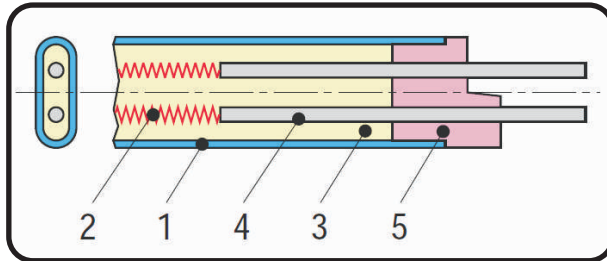


Track Heating Elements

HEATING ELEMENT

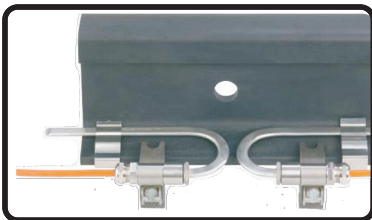


These high-quality heating elements with their continuous, homogeneous, seamless and ultra-pure magnesium oxide insulation, their sheath made of 18 / 8 chrome-nickel steel and a cross-section of approx. 5.3 x 13.2 mm have been used as heating elements for more than 70 years.

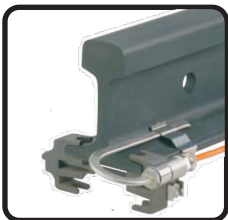


- 1 Sheath
- 2 Heating element
- 3 Insulation (magnesium oxide), highly compacted, seamless
- 4 Connection pins
- 5 End insulation

HEATING ELEMENT MOUNTING

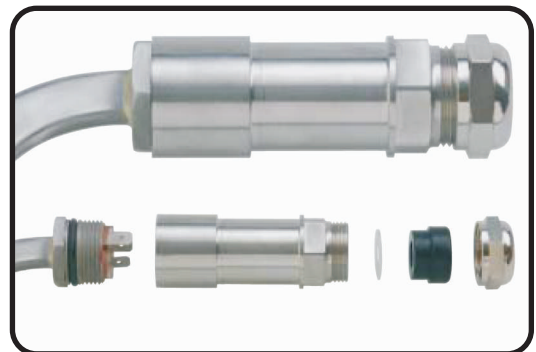


Point-heating elements are attached to the rail foot using special clamping yokes made of corrosion-resistant chrome-nickel steel. The clamping pressure is chosen so that optimal heat transfer is guaranteed.



The newly developed, 100 000-times proven heating-element connector mounting provides the perfect method of fixing the connector and the heating element to the rail.

HEATING ELEMENT CONNECTOR



The connector is made of chrome-nickel steel and is completely waterproof, so that external influences such as moisture or dirt can not penetrate. The inside of the casing has a plastic coating. The wide grip surfaces on the screw cap and just two seals are further advantages.